

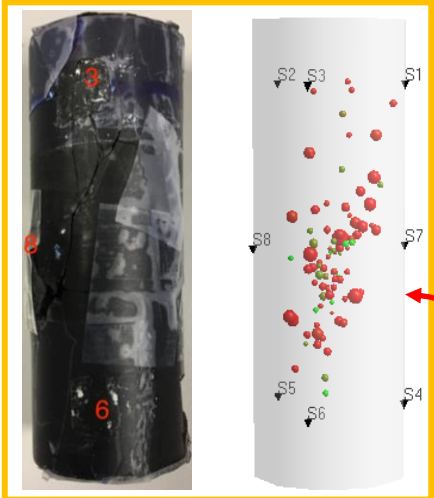
Testing the limitations of empirical traffic light systems used to manage the hazard of fluid induced seismicity.

Investigator Team: Dr Nicola De Paola (Durham University), **Mr Fadul Dawood (ECR, Durham University)**, **Dr Tom Kettlety (ECR, Oxford University)** & Prof. Mike Kendall (Oxford University).

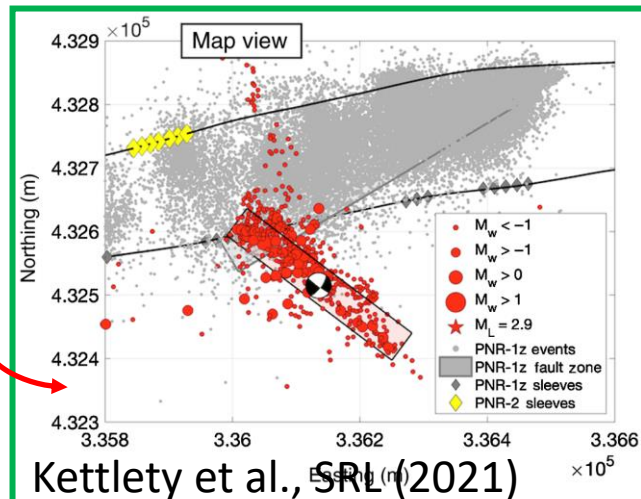
Aims: To find any diagnostic seismic signature produced by the spatiotemporal transition from operationally induced microseismicity to larger ruptures hosted on pre-existing faults.

Research Methods:

Laboratory Induced EQs



Field induced seismicity



Kettlety et al., SRL (2021)

Research Questions:

Q.1) How does the transition from distributed fracturing to slip along large faults affect the evolution of seismic parameters of laboratory earthquakes?

Q.2) Can laboratory-scale laws be upscaled to field-scale data to find the signature of precursory microseismic activity to large induced events.